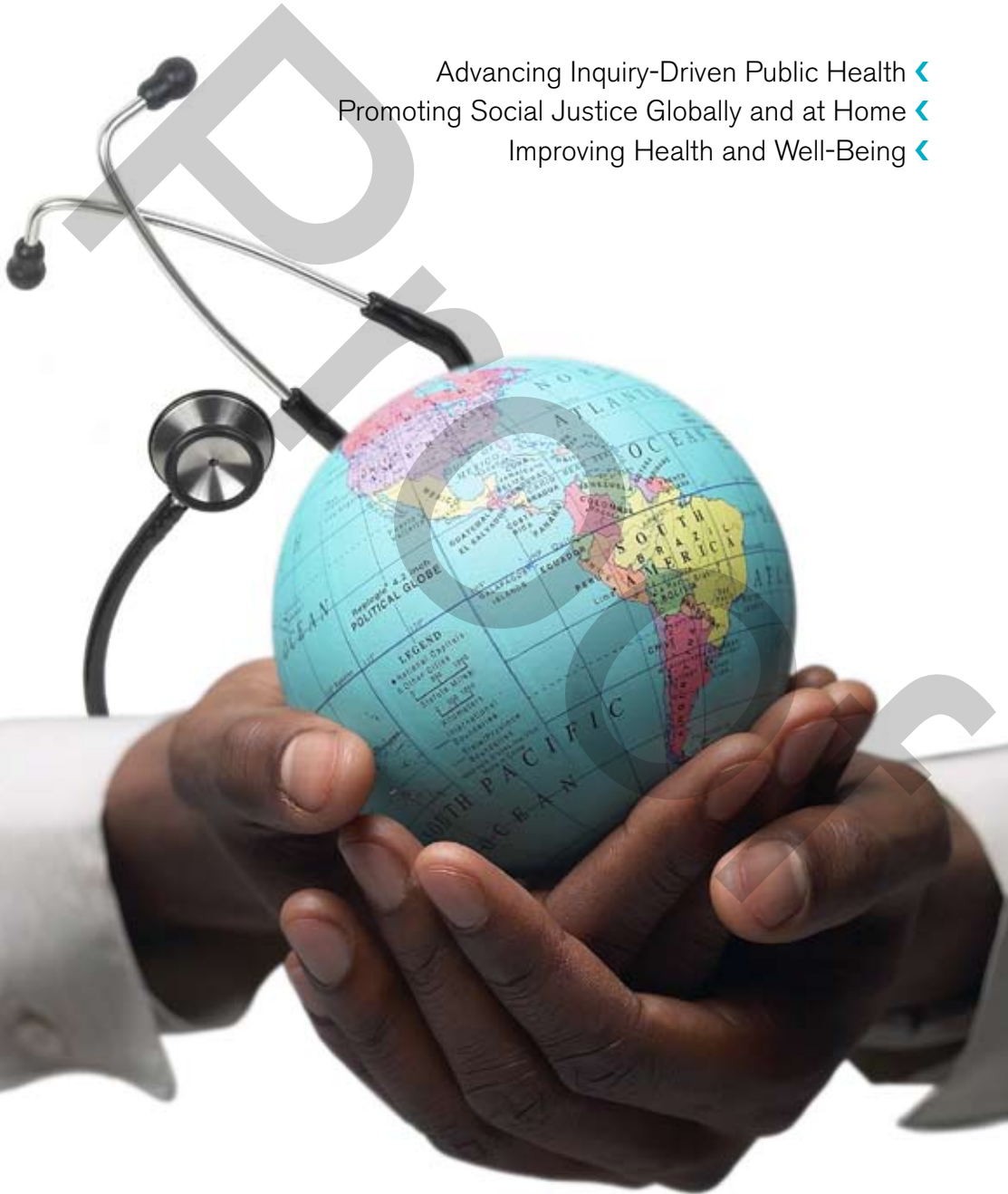


# YESHIVA UNIVERSITY INSTITUTE FOR PUBLIC HEALTH SCIENCES

Advancing Inquiry-Driven Public Health <  
Promoting Social Justice Globally and at Home <  
Improving Health and Well-Being <





The mission of Yeshiva University's Institute for Public Health Sciences is to enhance research, scholarship and practice in public health in order to train tomorrow's leaders. The Institute focuses on behavioral sciences, chronic diseases, health disparities and global health, and provides research and training opportunities for researchers, faculty, practitioners and students interested in public health and preventive medicine. The Institute enables interaction among diverse professionals, experts and students/trainees from throughout the Yeshiva University community.

#### **THE INSTITUTE'S ACTIVITIES INCLUDE:**

- Novel education programs, including a Public Health Certificate program and a postdoctoral, research-oriented Master of Public Health program
- "Public Health Think Tanks" bringing together diverse faculty and trainees in interdisciplinary and interprofessional public health scholarship
- Seminars and symposia of interest to public health and preventive medicine
- Global partnerships to promote the mission of the Institute
- Research within practice-based and service-oriented settings

## EDUCATIONAL PROGRAMS:

### 1. Certificate in Public Health

The Certificate in Public Health program provides an introduction to public health in a 10-credit program, which can be completed in one year. The curriculum includes courses in behavioral and social dimensions of public health, global health, epidemiology and biostatistics. Those who successfully complete the certificate program can apply the 10 credits toward the Master of Public Health within two years of graduation.

### 2. Master of Public Health

The Master of Public Health program will educate students and professionals from diverse disciplines to incorporate a public health perspective into their work, and to perform research that will inform public health policy and

improve health. Master of Public Health Program graduates will be prepared to meet the complex challenges that face health care administrators, clinicians, educators, policy makers and researchers, as well as organizations, businesses, governments, research groups and health advocacy programs.

The program will be built around case-based and service-oriented learning, providing opportunities for establishing sustainable academic-community collaborations, conducted with the highest degree of personal integrity and professional ethics. The overall training goal is to conduct scholarly interprofessional research to improve health, enhance well-being, promote social justice and produce leaders in translational public health research.

## ADMINISTRATION AND STAFF:



---

### **Sonia Suchday, PhD,**

Co-Director  
Program Director and Associate Professor of  
Psychology in the Clinical Psychology PhD Program (Health Emphasis)  
ssuchday@aecom.yu.edu  
718.430.3856

---



---

### **Paul R. Marantz, MD, MPH**

Co-Director  
Associate Dean for Clinical Research Education  
Professor of Clinical Epidemiology and Population Health  
marantz@aecom.yu.edu  
718.430.4187

---



---

### **Merrilly Calabrese**

Administrator  
calabres@aecom.yu.edu  
718.430.3234

---

P



of



**Yeshiva University**  
**INSTITUTE FOR PUBLIC HEALTH SCIENCES**

Albert Einstein College of Medicine  
1300 Morris Park Avenue—Mazer 434 • Bronx NY 10461  
Phone: 718.430.3234 • Fax: 718.430.4035  
E-mail: [IPHS@aecom.yu.edu](mailto:IPHS@aecom.yu.edu)  
Visit us online at [www.yu.edu/IPHS](http://www.yu.edu/IPHS)

Yeshiva University's Institute for Public Health Sciences  
is jointly sponsored by the Ferkauf Graduate School of Psychology  
and the Albert Einstein College of Medicine.