

Confocal Application Notes

Vol. 2 August 2004



Customizing the User Interface of LCS

1. Personal Profiles

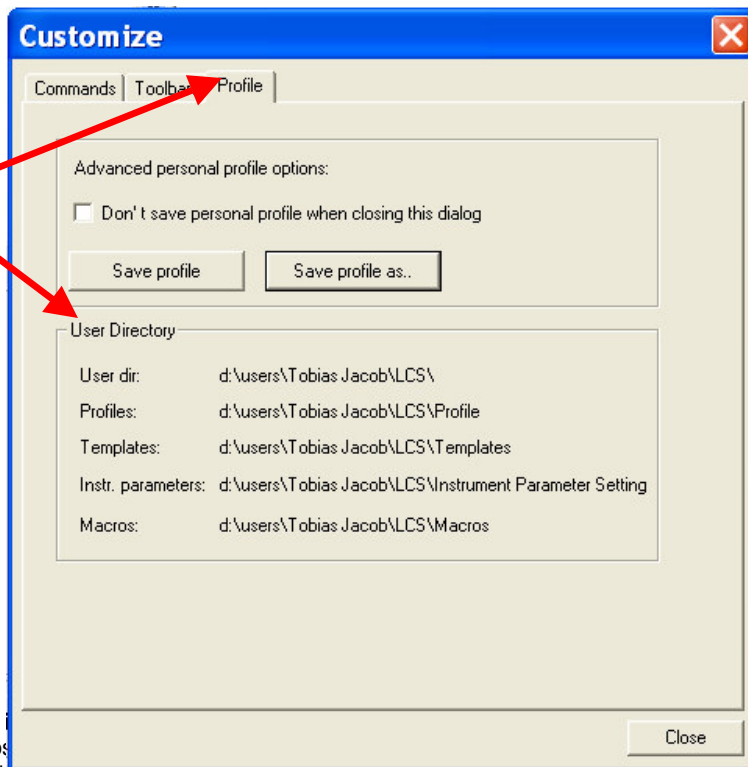
Any LCS user can easily customize and adapt the user interface of LCS so its functionality matches the experiment. The user interface can be saved as a personal profile that encompasses toolbars, the panel box configuration and the active Viewer template. This application note describes how to work with personal profiles. It is the first in a series of notes explaining how to customize LCS.

The personal profile

The active viewer template, buttons and toolbars and the panel box settings are all linked to a personal profile. A user can create multiple profiles for different experiments and different users can each have their own customized settings.

Open the *Tools* menu in LCS, select *Customize* and open the *Profile* tab.

The *User Directory* box shows you the location of your user directory and where your profiles and templates are saved.



Confocal Application Notes

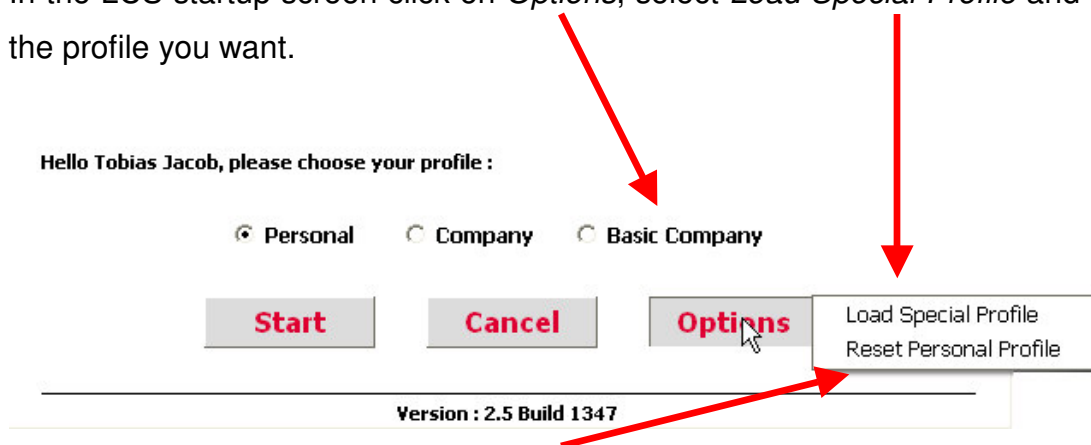
Vol. 2 August 2004



Selecting a user profile during LCS startup

As a default LCS will start with your personal profile, *PersonalProfile.pro*, from your user directory. If you have created different profiles, you can also select a saved profile at the start of LCS.

In the LCS startup screen click on *Options*, select *Load Special Profile* and open the profile you want.



You can also reset your personal profile to the Company Profile. This option is useful in case your profile has been corrupted and doesn't function properly.

It is advisable to create a backup copy of your profile in case the original one becomes corrupted. You can then select the backup file from the *Load Special Profile* menu.

Confocal Application Notes

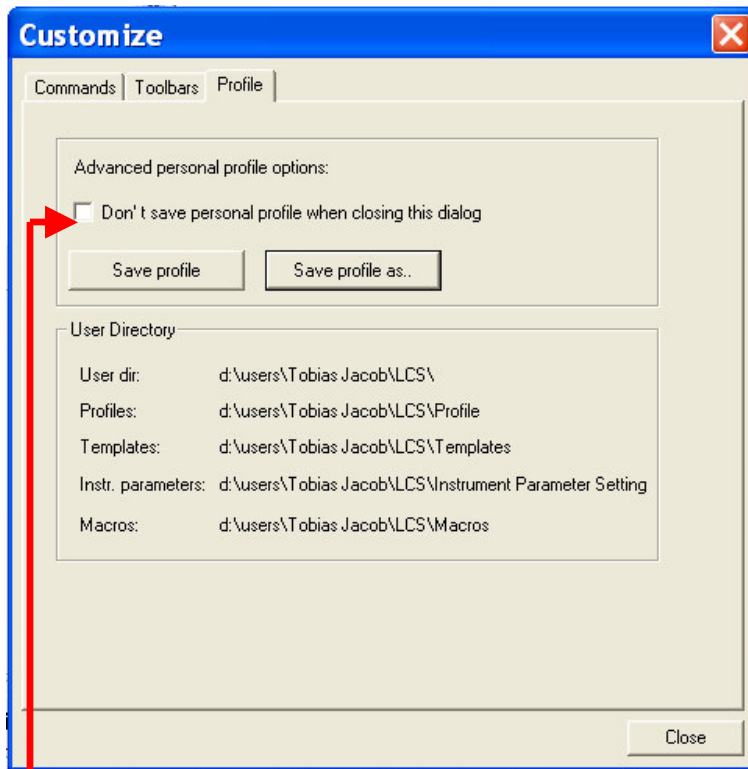
Vol. 2 August 2004



Saving the adapted desktop as a personal profile

After you have adapted the user interface of LCS to meet your needs you can save these changes to the user profile.

Select the *Profile* tab and click *Save profile* to save the current configuration to the currently used file. LCS will automatically save the profile when the *Customize* box is closed unless you check this option



When closing LCS, the program automatically saves changes to the current profile and also to the *lastexit.pro* file.

You can use *Save profile as* to save a copy of your current profile under a different name.

