

Confocal Application Notes

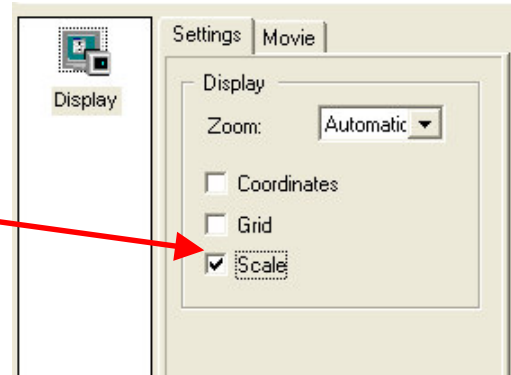
Vol. 3 June 2005
LCS version 2.61 Build 1537



Adding a Scale Bar to your image

This application notes describes how to do add a customizable scale bar to your image.

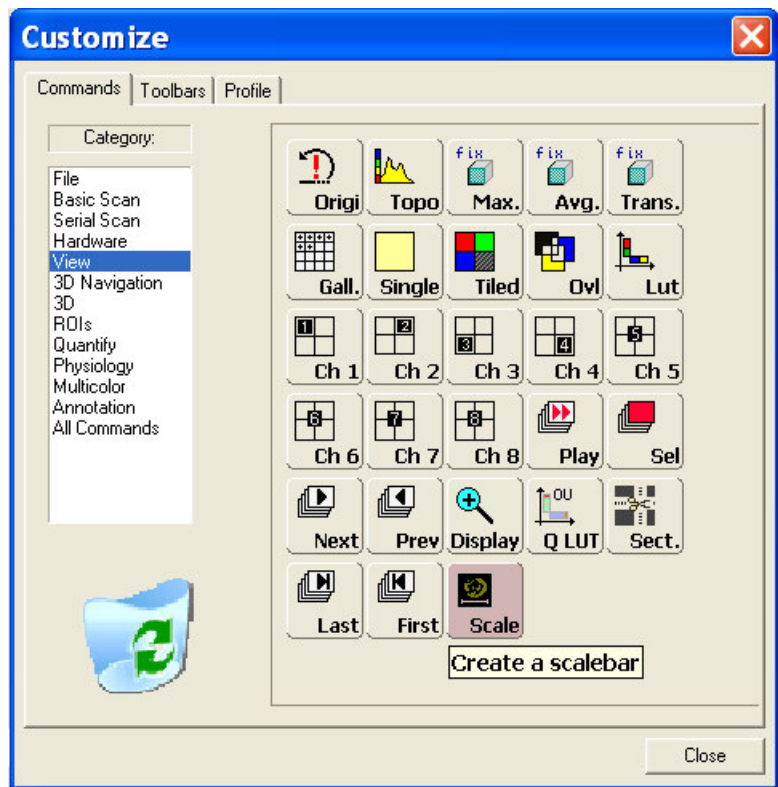
To add a scale bar to the active image simply go to *Display -> Settings* and check the *Scale* box.



This scale bar can now be further customized. Click on the *Scale* button to open a dialog window for the scale bar properties.



Please note: You might have to add this command button to the LCS interface. To do so select *Tools* from the menu and go to *Customize*. Under the *Commands* tab select *View* and drag and drop the *Scale* button to the tool bar of your choice.



Confocal Application Notes

Vol. 3 June 2005
LCS version 2.61 Build 1537



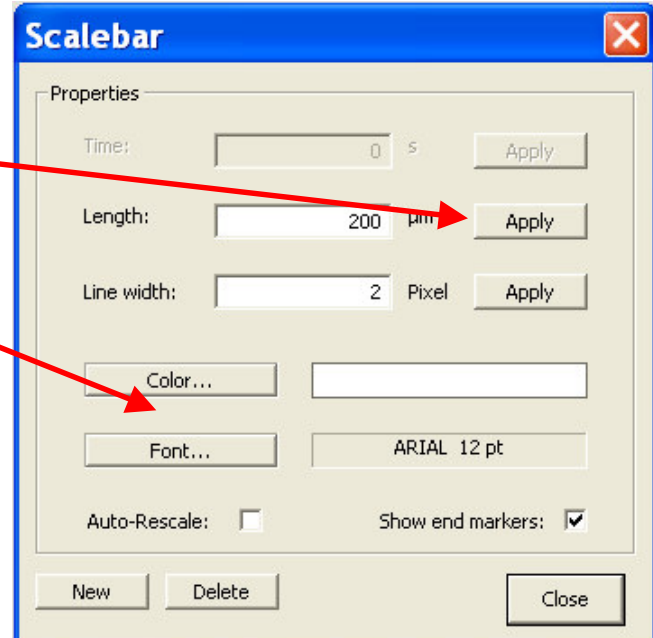
In the properties window you can change not only the length of the scale bar but also the way it looks.

Adjust length and line width of the bar and click on *Apply*.

Color and font can also be altered.

Furthermore, the position of the scale bar within the active image can be changed. **This requires the scale bar dialog to be open!**

With the dialog window open, just click on the scale bar and, holding the mouse button down, move the bar to its new position.



To save the scale bar with the image first adjust the scale bar to meet your needs. Next, set the *Display* to 1:1.

Now right-click into the active image and select *Send to -> Experiment -> Selection (snapshot)* from the menu.



The current image with the scale bar will be sent to the experiments folder and can be saved from there as a *.tif image.

Please note: A scale bar can only be applied to raw data but not to snapshots!